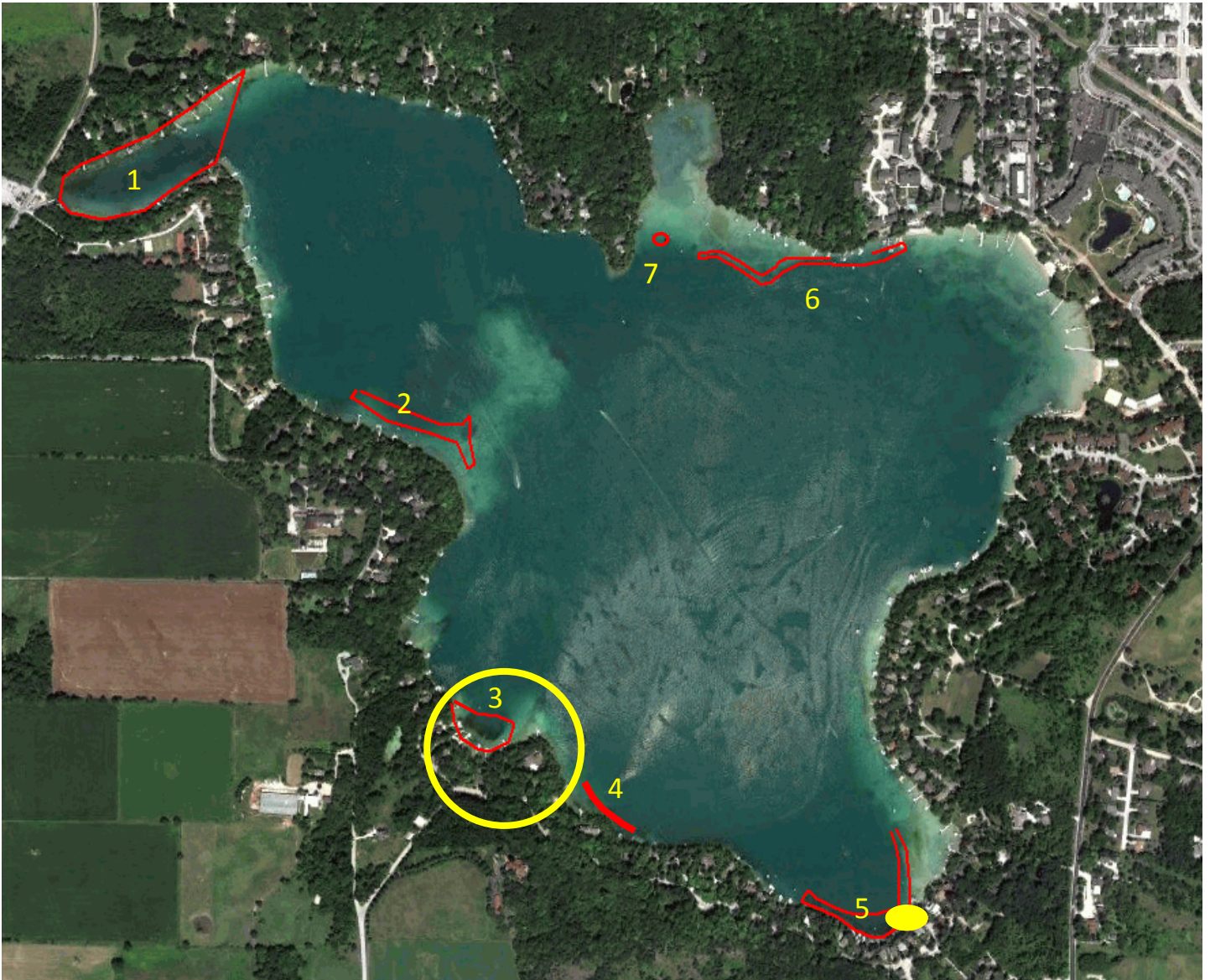


Elkhart Lake—Sheboygan County, WI

6-24-15 Treatment Areas

(Highlighted in Yellow)



Area # Size (acres)

Area #	Size (acres)
1	
2	
3	1.2
4	
5	0.5
6	
7	

Total 1.7 acres

Area 3: Curlyleaf Pondweed and Eurasian Watermilfoil. Aquathol-K: 1 ppm, 3.6 gal.
DMA4-IVM, 2 ppm, 8.5 gal.

Area 5: Eurasian Watermilfoil. DMA4-IVM: 2 ppm, 3.5 gal.

Marine Biochemists
6302 W. Eastwood Ct.
Mequon, WI 53092
(888) 558-5106
www.marinebiochemists